

FACTS & DATA

Name of Hotel: **COCOTINOS SEKOTONG LOMBOK**
A Boutique Beach Resort & Spa

Classification: Four Star Boutique Beach Resort

Start-up operation: 10 August 2010

Hotel address: Jl. Raya Dusun Pandanan, Tawun – Pelangan KM51, Kecamatan
Sekotong, Lombok Barat, Lombok – West Nusa Tenggara, Indonesia

Hotline Reservation: +62 81 907 972 401 E: info.desk@cocotinos-sekotong.com

Telephone: +62 81 933 136 089 E: fo.desk@cocotinos-sekotong.com

E-Fax: +65 6826 4131 W: www.cocotinos-sekotong.com

Key Personnel:

- 1) Jelantik Suhartha - General Manager
E: jelantik@cocotinos.com
M: +62 811 385 8461
- 2) Rahman - Marketing & E-Commerce Coordinator
E: sales@cocotinos-sekotong.com
M: +62 81 917 270 852

Owning Company: PT. Odyssea Utama
Dusun 3, Desa Kima Bajo Kecamatan Wori
Kabupaten Minahasa Utara – Sulawesi Utara, Indonesia

Sister Hotel: Cocotinos Manado
Dusun 3, Desa Kima Bajo Kecamatan Wori, Kab.Minahasa Utara
Sulawesi Utara, Indonesia

Tel: +62 (0) 8124308800 E-Fax: +65 67220685
E: info.desk@cocotinos-manado.com
Web: www.cocotinos-manado.com

In House Dive Operator: Odyssea Divers (www.odysseadivers.com)
Lombok, West Nusa Tenggara & Manado North Sulawesi, Indonesia

FACTS & DATA

ABOUT US

Cocotinos Sekotong is the second resort of Cocotinos Hotel Group Indonesia. After the completion of the first Cocotinos resort in Manado, the owner, TM Wong, having visited Bali on numerous occasions decided to make a trip to Lombok.

He fell in love with the beautiful area of south-west Lombok and within a week he bought the beach-front land that was to become the site for Cocotinos Sekotong, a *Boutique Resort and Spa*.

Cocotinos Sekotong Lombok is located in Tanjung Empet and is set within an old coconut grove fronting over 300 meters of white-sand beach, part of which is a private cove. Rolling hills flank the left and rear sides of the resort and on the right the existing road runs next to the sea, making it impossible for other resorts to be built adjacent to Cocotinos Sekotong Lombok.

Cocotinos Sekotong Lombok therefore enjoys the advantage of being secluded for the present time and in the future.

TM Wong designed Cocotinos Sekotong Lombok himself, on the basis of his previous design for Cocotinos Manado. His primary goal is to create a highly functional environment that has a chic and yet relaxed ambience, catering to the needs of the present-day traveler.

However, Cocotinos Sekotong Lombok, with its stunning white-sand beaches and coconut fringed islands facing the resort is more luxurious and built on a grander scale.

We, at Cocotinos Sekotong Lombok, are proud to have a young and dynamic management team that is talented and dedicated to providing a high level of service with innovative flair, led by Iwan Sitompul, an astute and senior professional in the hotel industry.

OPERATIONAL CONCEPT AND PHILOSOPHY

Cocotinos Sekotong Lombok strives to excel with a number of clear commitments:

- ☼ ***A Commitment*** to a boutique-style operation that reflects a highly developed, guest oriented service with an Asian flavor.
- ☼ ***A Commitment*** to providing facilities of the highest standards.
- ☼ ***A Commitment*** to cultivate local talent and promoting local traditions.
- ☼ ***A Commitment*** to promoting a culture that is eco-friendly and protects the environment.
- ☼ ***A Commitment*** to quality management that builds on a close liaison between the hotel owner operator, travel industry and guest.

FACTS & DATA

Cocotinos Sekotong Lombok believes that:

- ☼ *Its operational concept* provides sound opportunities not only for the resort but also for its business partners and employees.
- ☼ *It's our sole objective* to provide a total service product that results in benefits to the owner, guests, employees and all our supporters.
- ☼ *It's also our philosophy* in operating Cocotinos Sekotong that the use of local produces seen as a priority.

THE RESORT

Cocotinos Sekotong Lombok is set amidst the rolling green hills of Sekotong, within a coconut grove, and overlooking three idyllic tropical islands, namely Gili Nanggu, Gili Tangkong and Gili Sudak. The 3.2 hectare resort captures the tranquility and serenity of the surroundings. The resort is blessed with two hills, (on the left and rear) and 300m of white-sand beach, part of which is a private cove.

Add to this, a choice of **36 (thirty six) well-appointed**, air-conditioned rooms and villas, an Al-fresco restaurant on the water's edge beside a stunning pool, attentive staff offering discreet and gracious service, and you have the perfect luxury retreat in the area of south-west Lombok.

To soothe your senses, the Laleina Spa has all the ingredients for a state of bliss and total relaxation. The Laleina Spa is a wellness spa featuring Indonesian treatments, with creative reinterpretations of time-honored traditions using local ingredients and offering a wellness cuisine that includes wholeness drinks, organic vegetables and fruits.

Cocotinos Sekotong Lombok also offers recreational and cultural activities. In-house Odyssey Divers offers an extensive diving program for the novice and experienced divers, as well as snorkeling and other sea sports. The surrounding area is also ideal for nature trekking and cycling for those who are seeking a quiet, soft adventure holiday.

Just a few kilometers away from Cocotinos Sekotong Lombok is "the desert point" at Bangko - Bangko where you can find one of the best surfing spots in Lombok.

For those who are seeking magical moments with their partners, Cocotinos Sekotong Lombok is the perfect hideaway.

FACTS & DATA

THE ACCOMMODATION

Currently Cocotinos Sekotong Lombok has 36 rooms including 5 villas with individual plunge pools and will add a cluster of new 8 units of Garden Room with garden view as from the 1st of July 2012.

The bedrooms are designed with high ceiling and a special louvered window with mosquito netting that allows for cross ventilation while providing security to the guests. Guests can choose to sleep in air-conditioning or natural ventilation.

The bathrooms are designed to be bright and airy. Every bathroom has a skylight and glass blocks to allow natural lighting, as well as ventilation windows with mosquito netting to keep out the bugs. Guests will enjoy the spacious shower area with skylight and planter box at the side which gives the feeling of showering in the outdoors. Privacy doors for the water closet and shower areas make the bathroom more practical for double sharing, especially during the early morning.

In general, the resort is built using local material that is available in the vicinity of the resort. Pebble found on the beach are used on columns and accent walls; washed pebble is the floor finish in the bathrooms and public areas; and “Buluh Tui” a type of bamboo used by local fisherman is featured on bathroom doors and balcony partitions. Volcanic stone is hand-hewed and used for the construction of the boundary wall.

All rooms are individually designed and built in such a way that they are fully integrated into the surrounding landscape.

The rooms are divided into 5 categories with different characteristics and they all have in common luxurious amenities and facilities such as:

- Spacious bedroom
- Day bed which can be converted as an extra bed (for Terrace and Garden Room),
- Air-conditioning and Ceiling fan,
- Stylish handmade teak furniture including a large writing desk and an open concept wardrobe,
- LCD TV with international channels,
- Electronic in-room personal safe,
- Phone (IDD call through Operator),
- Free Internet Connection at Ela - Ela Restaurant,
- Eco-friendly drinking water dispenser
- Coffee/tea making facilities,
- Refrigerator and mini bar,
- In-door Shower stall
- Outdoor shower stall (all rooms / villas except for Terrace rooms),
- Long bath (only available in the villas),
- Bathrobe, slippers and hair dryer,
- Toilettes amenities,
- Sumptuous toweling,
- Aromatic oil burners (in Villa only),
- Veranda with teak furniture including 2 armchairs, coffee table and day bed(except Terrace room)

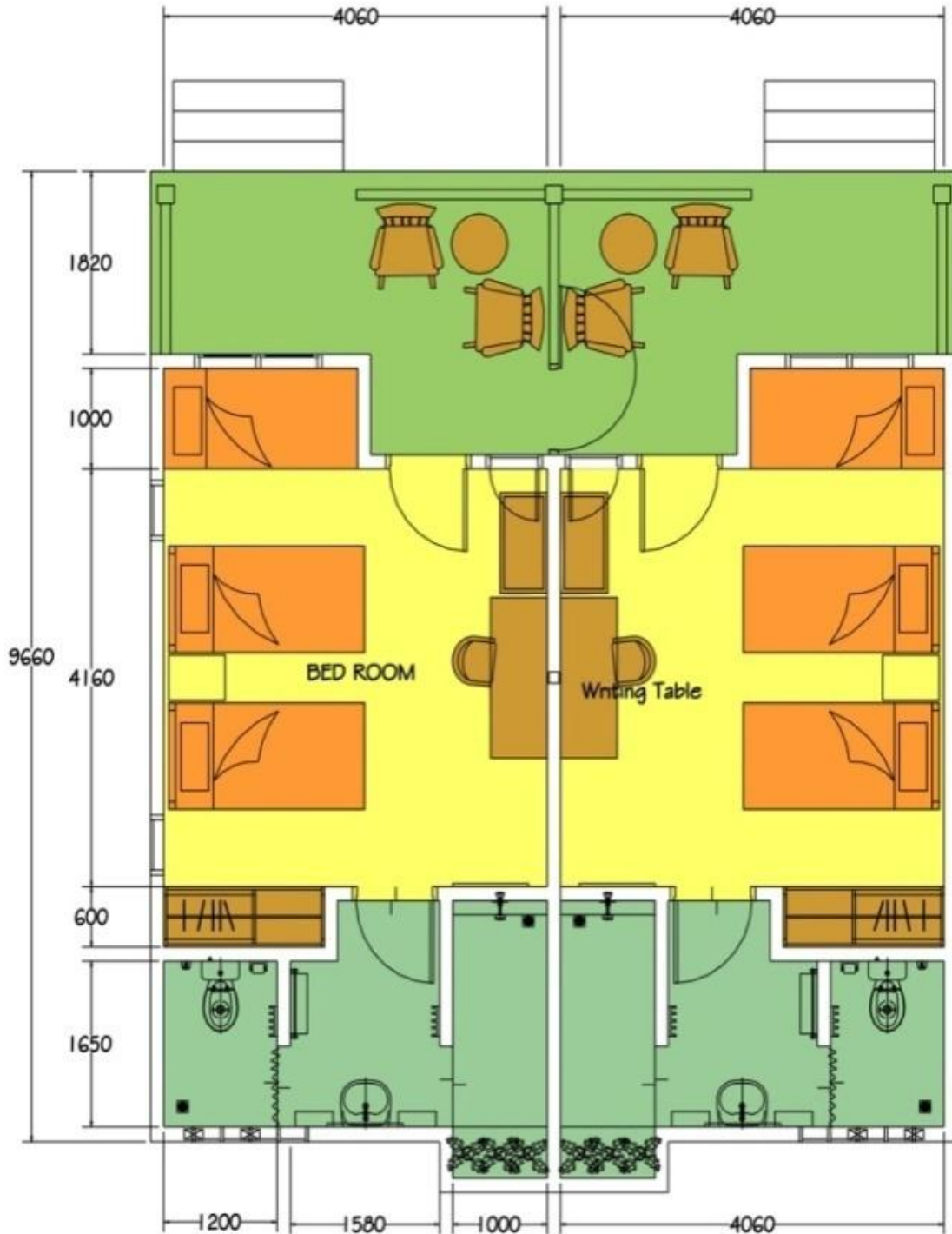
COCOTINOS

A Boutique Beach Resort & Spa

Sekotong • Lombok

FACTS & DATA

TERRACE ROOMS GARDEN VIEW (SUPERIOR ROOM)



FACTS & DATA

TERRACE ROOMS GARDEN VIEW (SUPERIOR ROOM)

A cluster of 8 units of well-appointed guest rooms overlooking a lush garden, each features either a king-size bed or twin beds and a day bed. The day bed can be converted during the night into an extra bed. The bathroom is airy and is fitted with a central wash basin with mirror, a shower stall and a separate WC cubicle.

The entrance door is of solid wood and so is most of the interior furniture which includes a long writing desk with chair, an open-framed wardrobe and bedside tables. An over sized room number is carved onto a teak panel beside the entrance door and the veranda features two armchairs and a coffee table of solid teak. A rustic bench hewed from old coconut trunks completes the relaxing ambience.

Matrix Data:

- Number of units: 8 units including 4 rooms interconnected
- Number of bedroom: 1 (One)
- Bedding configuration:
 - Twin bedroom + 1 daybed: 6 units
 - Double bedroom + 1 daybed: 2 units
- Room size (overall): # 36 Sqm (387 Sq Feet), consisting of
 - Bedroom size: 19 Sqm (204 Sq Feet)
 - Bathroom Size: 10 Sqm (107 Sq Feet)
 - Veranda Size: 07 Sqm (75 Sq Feet)
- Bed size: Twin bed / day bed: 100 X 200 CM / King size bed: 200 X 200 CM
- Maximum occupancy: 2 Adults + 2 Children below 12 years old or 3 Adults

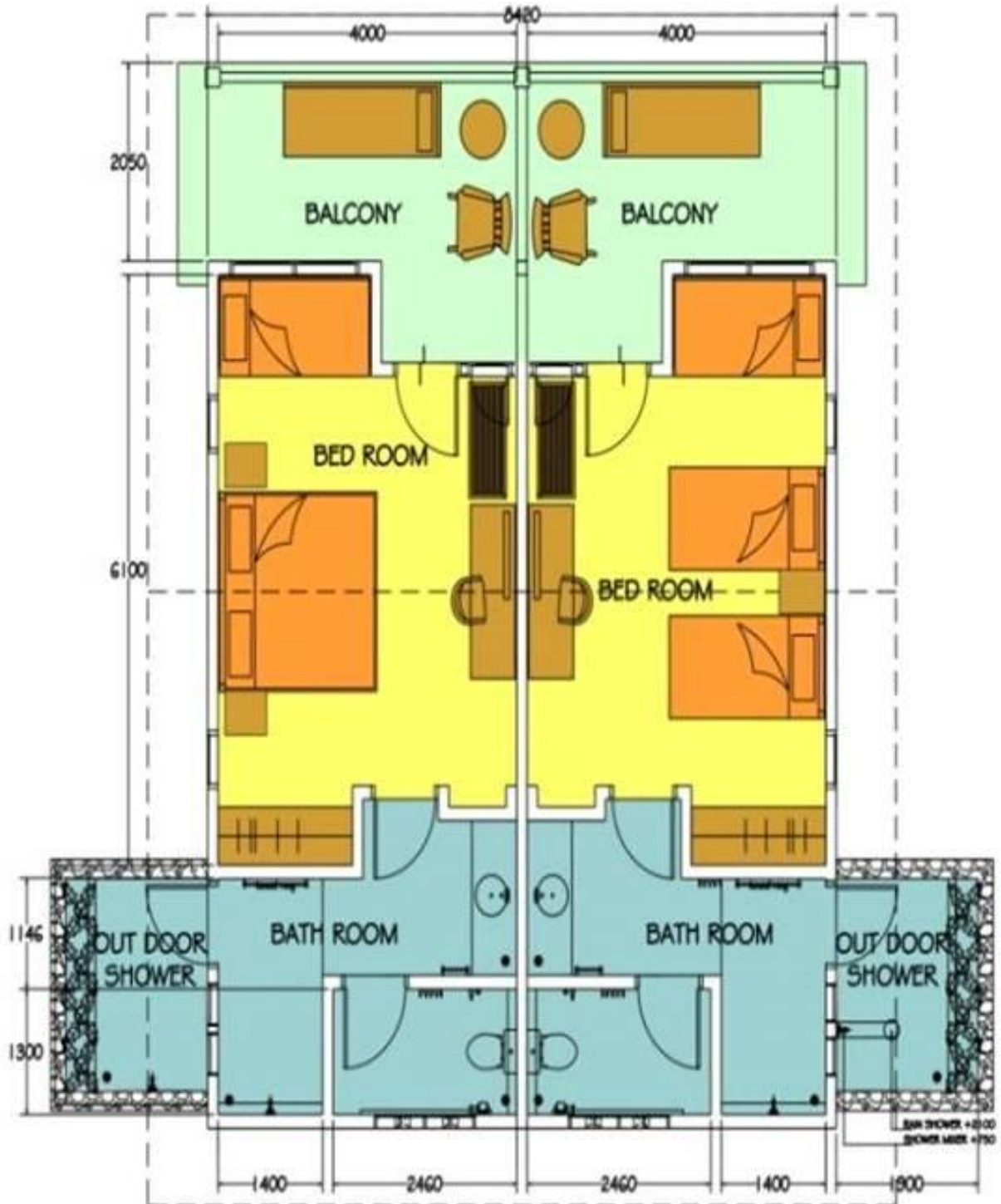
COCOTINOS

A Boutique Beach Resort & Spa

Sekotong • Lombok

FACTS & DATA

GARDEN ROOMS GARDEN VIEW (DELUXE ROOM)



FACTS & DATA

GARDEN ROOMS GARDEN VIEW (DELUXE ROOM)

A cluster of 20 well-appointed guest rooms in a lush garden setting with two adjoining rooms under one roof, either with a king-size bed and/or twin beds. Every room has a daybed which can be converted into an extra bed at night.

The spacious and airy bathroom features both indoor and outdoor showers, separate WC cubicle, a terrazzo wash basin with oyster shell inlays and a beveled mirror with a carved-timber frame.

The interior furniture is custom-made from solid teak. The bedside tables have specially rounded edges to prevent accidents, the writing table is large with an elegant chair and the wardrobe is an open timber frame. Contemporary art work and wall lights made from recycled teak and coconut leaf-stems contribute to that added charm.

The entrance door is of solid local mahogany. An over sized room number is carved onto a teak panel beside the entrance door and in the deep veranda are two comfort table teak armchairs, a coffee table and an outdoor day bed to provide a relaxing ambience.

Matrix Data:

- Number of units: 20 units including 6 rooms interconnected
- Number of bedroom: One (01)
- Bedding configuration:
 - Twin bedroom + 1 daybed: 8 units
 - Double bedroom + 1 daybed: 12 units
- Room size (overall): # 50 Sqm (538Sq Feet), consisting of
 - Bedroom size: 22 Sqm (237 Sq Feet)
 - Bathroom Size: 19 Sqm (204 Sq Feet)
 - Veranda Size: 09 Sqm (97 Sq Feet)
- Bed size: Twin bed / day bed: 100 X 200 CM / King size bed: 200 X 200 CM
- Maximum occupancy: 2 Adults + 2 Children below 12 years old or 3 Adults

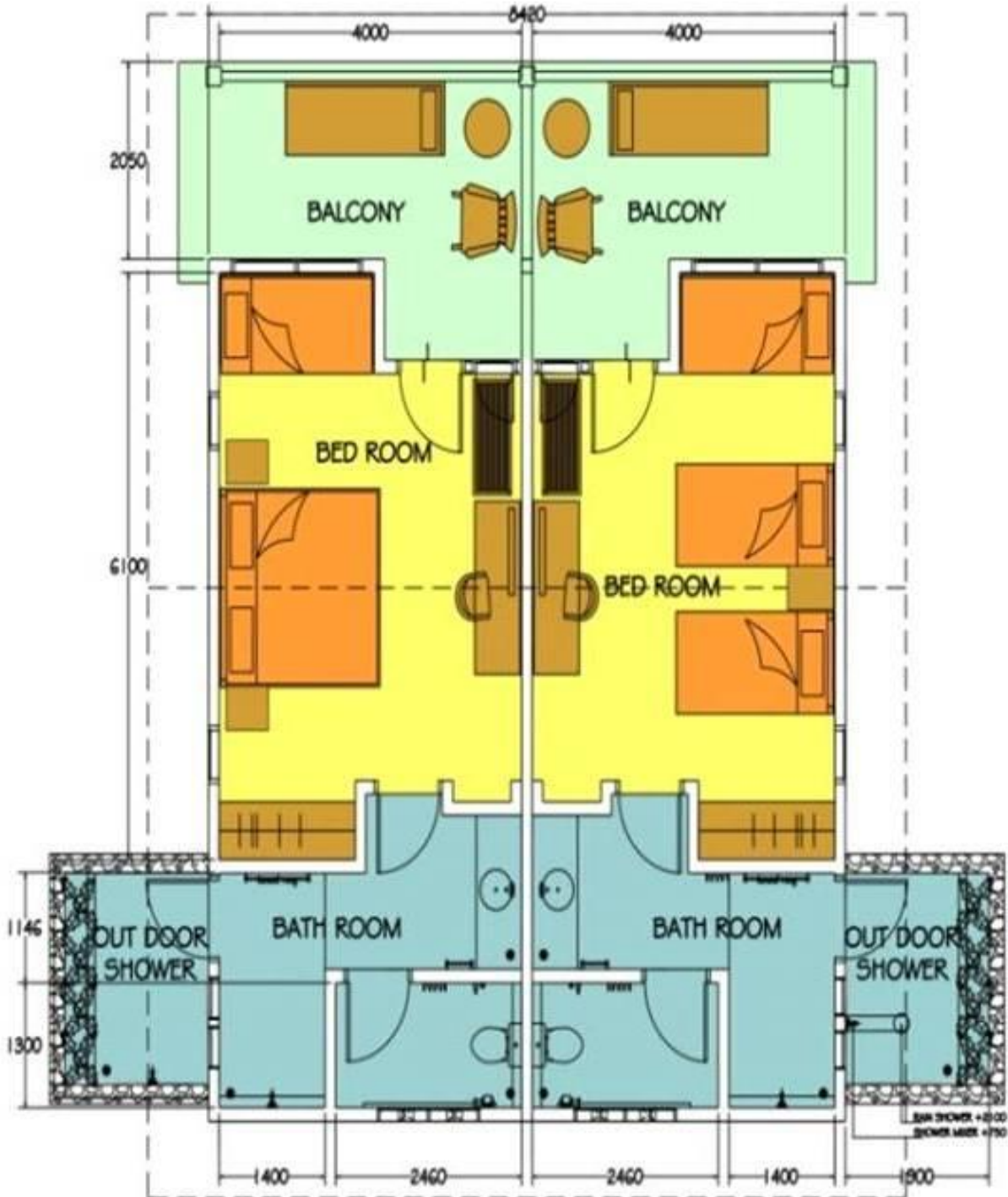
COCOTINOS

A Boutique Beach Resort & Spa

Sekotong • Lombok

FACTS & DATA

GARDEN ROOMS OCEAN VIEW / (SUPERIOR DELUXE ROOM)



FACTS & DATA

GARDEN ROOMS OCEAN VIEW (SUPERIOR DELUXE ROOM)

A cluster of 3 well-appointed guest rooms in a lush garden setting with two adjoining rooms under one roof, either with a king-size bed and/or twin beds. Every room has a day bed which can be converted into an extra bed at night.

The spacious and airy bathroom features both indoor and outdoor showers, separate WC cubicle, a terrazzo wash basin with oyster shell inlays and a beveled mirror with a carved-timber frame.

The interior furniture is custom-made from solid teak. The bedside tables have specially rounded edges to prevent accidents, the writing table is large with an elegant chair and the wardrobe is an open timber frame. Contemporary artwork and wall lights made from recycled teak and coconut leaf-stems contribute to that added charm.

The entrance door is of solid local mahogany. An over sized room number is carved onto a teak panel beside the entrance door and in the deep veranda are two comfort table teak armchairs, a coffee table and an outdoor daybed to provide a relaxing ambience.

Matrix Data:

- Number of units: 3 units including 2 (Two) rooms interconnected
- Number of bedroom: One (01)
- Bedding configuration:
 - Double bedroom + 1 daybed: 3 units
- View: Garden, ocean and pool
- Room size (overall): # 50 Sqm (538Sq Feet), consisting of
 - Bedroom size: 22 Sqm (237 Sq Feet)
 - Bathroom Size: 19 Sqm (204 Sq Feet)
 - Veranda Size: 09 Sqm (97 Sq Feet)
- Bed size: King size bed: 200 X 200 CM
- Maximum occupancy: 2 Adults + 2 Children below 12 years old or 3 Adults

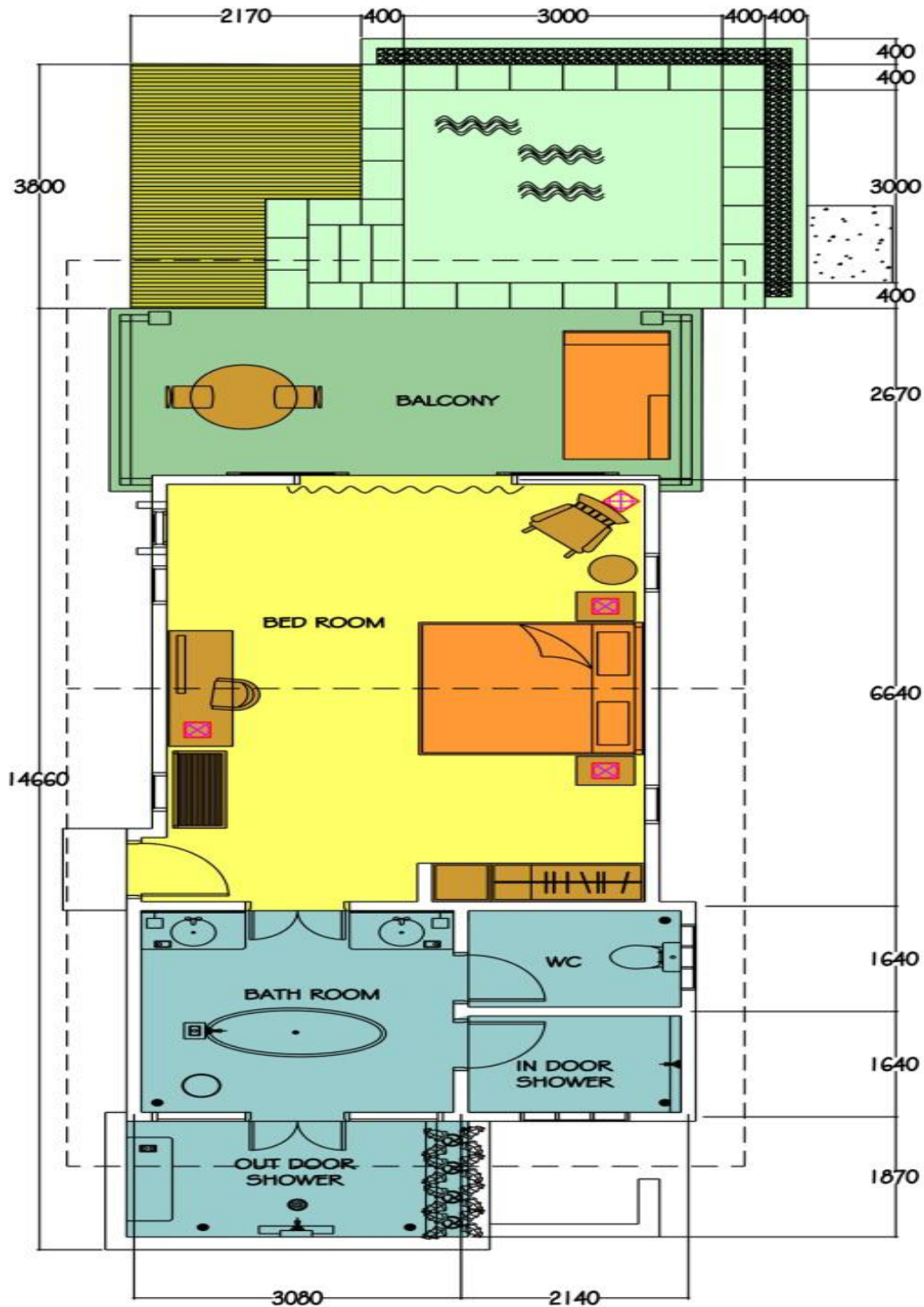
COCOTINOS

A Boutique Beach Resort & Spa

Sekotong • Lombok

FACTS & DATA

WATER'S EDGE VILLA (1-BEDROOM VILLA WITH OCEAN VIEW & PLUNGE POOL / BEACH FRONT)



FACTS & DATA

WATER'S EDGE VILLA (1-BEDROOM VILLA WITH OCEAN VIEW & PLUNGE POOL / BEACH FRONT)

A cluster of 03 well-appointed one-bedroom villa located on the water's edge with a stunning view of the ocean and 3 southern 'gilis', namely, Gili Nanggu, Gili Tangkong and Gili Sudak.

Each villa features a king-size bed and a large semi open-air bathroom, with indoor and outdoor showers, WC cubicle, two terrazzo wash hand basins with oyster shell inlay and an exquisite free-standing terrazzo bath.

Large glass sliding doors open to the wide veranda with an inviting plunge pool and timber deck that overlooks the beach and ocean; stone steps provide direct access to the beach.

The interior furniture is custom-made from solid teak. The bedside tables have specially rounded edges top prevent accidents, the writing table is large with an elegant chair and the wardrobe is an open timber frame. Contemporary art work and wall lights made from recycled teak and coconut leaf-stems contribute to that added charm.

The entrance door is of solid local mahogany. An over sized room number is carved onto a teak panel beside the entrance door and in the deep veranda are two comfort table teak armchairs, a coffee table and an outdoor daybed to provide a relaxing ambience.

Matrix Data:

- Number of units: 3units
- Number of bedroom: One (01)
- Bedding configuration: One King size (a king-size bed of 200 X 200 CM)
- Location: Beach Front
- View: Full Ocean and Southern 3 GILIs (Nanggu, Tangkong and Sudak)
- Room size (overall): # 106Sqm(1,140 Sq Feet), consisting of
 - Bedroom size: 32 Sqm (344 Sq Feet)
 - Bathroom Size: 37 Sqm(398 Sq Feet)
 - Veranda Size: 18 Sqm (194 Sq Feet)
 - Pool size: 09 Sqm(97 Sq Feet)
 - Timber pool deck: 10 Sqm(107 Sq Feet)
- Bed size: King size bed: 200 X 200 CM
- Maximum occupancy: 2 Adults + 2 Children below 12 years old or 3 Adults using an extra-bed

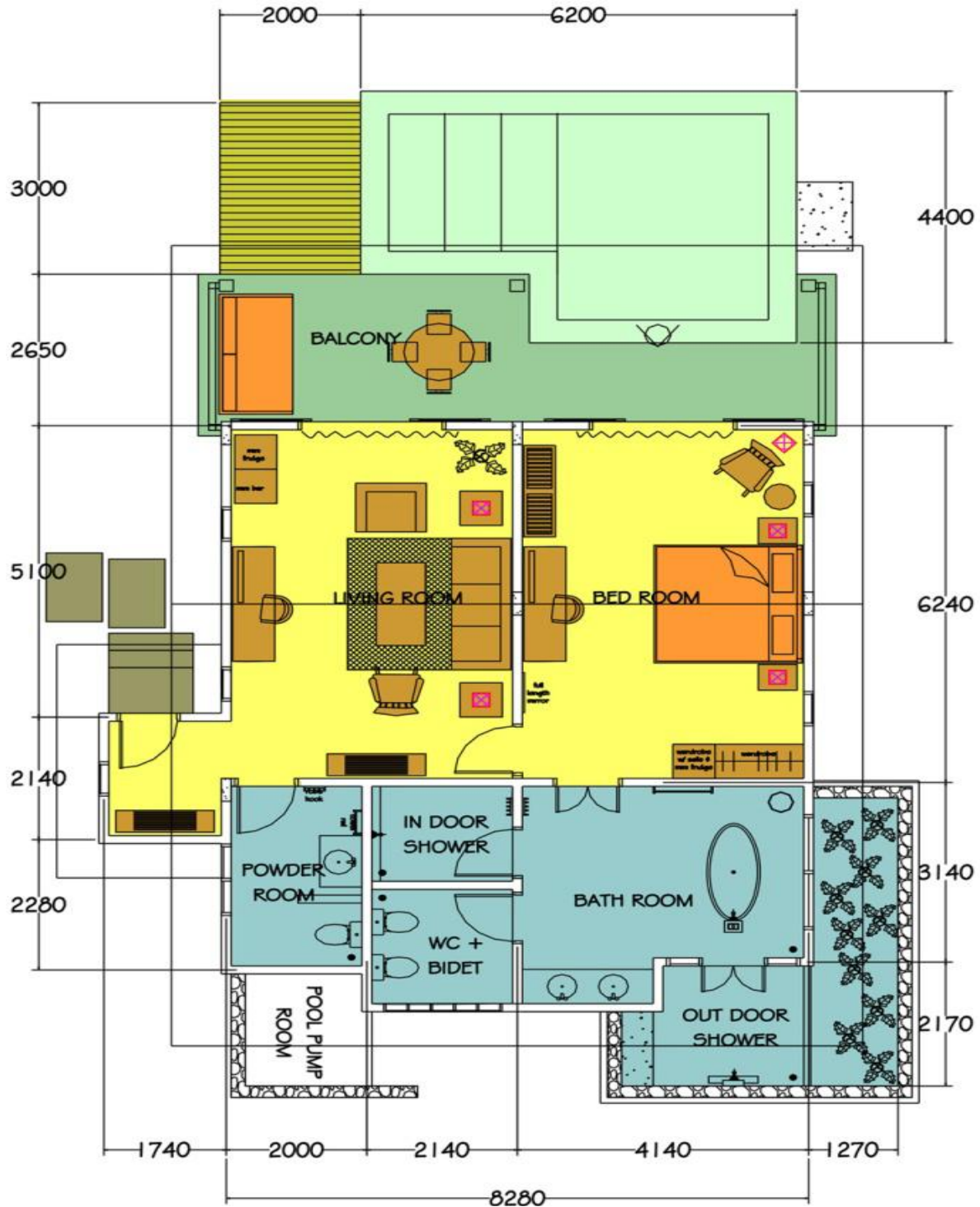
COCOTINOS

A Boutique Beach Resort & Spa

Sekotong • Lombok

FACTS & DATA

TANGKONG VILLA (2-BEDROOM VILLA WITH PLUNGE POOL)



FACTS & DATA

TANGKONG VILLA (2-BEDROOM VILLA WITH PLUNGE POOL)

The Tangkong Villa is located on the water's edge with a stunning view of the ocean and 3 southern 'gilis', namely, Gili Nanggu, Gili Tangkong and Gili Sudak. The bedroom features a king-size bed and the living room features an elegant rattan settee. Both rooms have large glass sliding doors that open to the wide veranda with an inviting plunge pool and timber deck that overlooks the beach and ocean; stone steps provide direct access to the beach.

The huge semi open-air bathroom features a spacious indoor shower stall with a timber stool, WC cubicle with bidet, a long twin-basin terrazzo vanity, a free standing terrazzo bath with an over sized wall mirror, and a private indoor garden which encloses a mature coconut tree within, redefining bathing as a truly sensational experience. Attached to the living room is a smaller bathroom with wash basin, WC and shower.

Both living room and bedroom are well accessorized and decorated with large contemporary art and charming light fittings. The outdoor teak furniture includes two comfort table armchairs with coffee table, a small dining table with 4 chairs and a plush daybed.

The Tangkong Villa is ideal as a comfort table hide-away for couples who want privacy but would still like to receive visitors in the living room and pool deck. Alternatively, for those who travel with friends or family, the living room can also function as an extra bedroom.

Matrix Data:

- Nbr. of unit: 1 only Villa size: 169 Sqm (1819 Sq Feet)
- View: Ocean/Southern 3 GILIs (Nanggu, Tangkong & Sudak)
- Size and Bedding configuration

Bedding	2-Rooms En-suite Villa	As 2 Bedrooms Family Villa
Room-1 with Bathroom Bedroom: 30 M2 (323 Sq Feet) Bathroom: 38 M2(409 Sq Feet)	Master bedroom with a king-size bed Bed size: 200Cm X 200Cm	Master bedroom with a king-size bed Bed size: 200Cm X 200Cm
Room-2 with Bathroom Bedroom: 26 Sqm(280 Sq Feet) Bathroom: 23Sqm(247 Sq Feet)	Living room with sofa, LCD and TV writing desk	2 single-beds (Size: 100cm X 200cm each), LCD TV and writing desk
Occupancy	2 Persons	Up to 4 persons
Veranda Size	23 Sqm (247 Sq Feet)	
Pool Size:	14 Sqm(150 Sq Feet)	
Timber Pool deck:	15 Sqm(161 Sq Feet)	

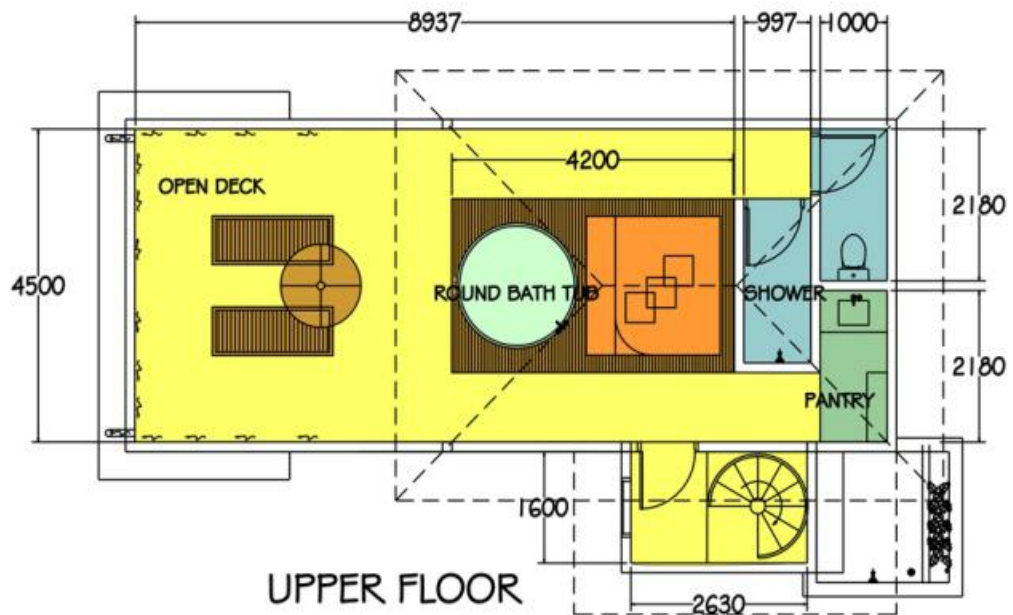
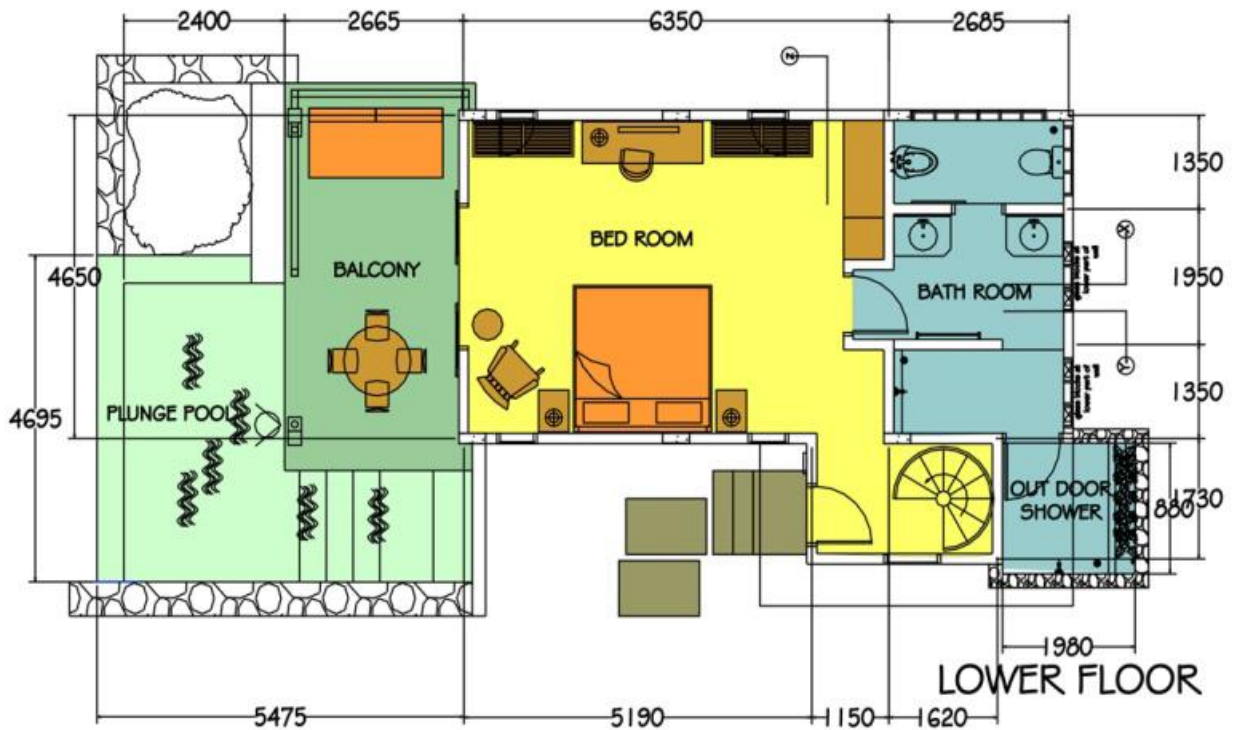
COCOTINOS

A Boutique Beach Resort & Spa

Sekotong • Lombok

FACTS & DATA

RINJANI VILLA (WITH PLUNGE POOL, JACUZZI AND DIRECT ACCESS TO THE BEACH)



FACTS & DATA

RINJANI VILLA (WITH PLUNGE POOL, JACUZZI AND DIRECT ACCESS TO THE BEACH)

A 2-storey Villa with 2 bedrooms, plunge pool and a grand terrazzo bath on the top, located on the hill side overlooking the ocean and 3 southern 'gilis', namely, Gili Nanggu, Gili Tangkong and Gili Sudak. Romantic couples will appreciate the spectacular view with privacy.

Room -1 (Ground Level): A spacious luxury bedroom which opens onto a private veranda, plunge pool and timber deck, overlooking the beach and the ocean; solid teak furniture include a king-size bed, a large writing desk with chair, a rattan armchair, and an open framed timber wardrobe.

Contemporary art and other accessories add to the charm. The spacious bathroom has an indoor shower stall and a separate WC cubicle with bidet. An outdoor shower completes the bathing experience.

Room-2 (Upper Level): An indoor stair case with a teak handrail leads you to the upper level where you find a polished timber platform in which is set a 1.80M diameter terrazzo bath, beside which is placed a 2M X 2M plush mattress. Walls clad with beach pebbles and bamboo blinds provide the privacy and intimacy that honeymoon couples crave, while still allowing for a great view of the ocean and the 3 'gilis'. A sensuous glass-fronted shower completes the intimate experience while a pantry and a WC provide the functional requirements. The upper deck of the Rinjani Villa promises many languorous afternoons and unforgettable evenings.

Matrix Data:

- Nbr. of unit: 1 only Villa size: 180Sqm(1937Sq Feet)
- View: Ocean/Southern 3 GILIs (Nanggu, Tangkong & Sudak)
- Number of bedrooms: Two (02) Type of building: 2 storey Villa
- Size and Bedding configuration

Room-1 (Ground Level)	Room-2 (upper Level)
Total: 100 M2 (1,076SqFeet) consist of: <ul style="list-style-type: none"> ▪ Bedroom: 46 M2 (495 SqFeet) ▪ Bed: A King size bed (2M X 2M) ▪ Bathroom: 20 M2 (215 SqFeet) ▪ Veranda Size: 15 Sqm (161 Sq Feet) ▪ Pool size: 08 Sqm(86 Sq Feet) ▪ Timber Pool Deck: 11 Sqm(118 Sq Feet) 	Total: 80 M2 (861 SqFeet) including a/o a king-size bed of 2M X 2M that is adjacent to large Terrazzo bath, in-door shower stall, pantry, sun deck and living room

FACTS & DATA

2016 – 2017 TARIFF

(VALID UNTIL 31ST OF MARCH 2017)

ROOM RATES

ALL QUOTED IN US\$.

ALL YEAR-AROUND EXCEPT HIGH SEASON PERIOD	PUBLISHED RATE	
	1 ~2 Adults	3 Adults
TERRACE ROOM (Superior Room) Room view: Garden	198.00++	234.00++
GARDEN ROOM (Deluxe Room) Room view: Garden	228.00++	264.00++
GARDEN ROOM (Superior Deluxe Room) Room view: Ocean and Pool	258.00++	294.00++
HIGH SEASON PERIOD 15 JUL. – 15 SEP. AND 20 DEC. – 10 JAN.	PUBLISHED RATE	
	1 ~2 Adults	3 Adults
TERRACE ROOM (SUPERIOR ROOM) With garden view	234.00++	282.00++
GARDEN ROOM (DELUXE ROOM) With garden view	264.00++	312.00++
GARDEN ROOM (SUPERIOR DELUXE ROOM) With garden, ocean and pool view	294.00++	342.00++
Compulsory Dinner:		
<ul style="list-style-type: none"> ▪ Christmas Dinner: US\$. 121++ per person per meal / New Year's Eve: US\$. 151++ per person per meal ▪ Child below 12 years old: 50% discount ▪ No checkout is allowed on 30th & 31st of December 		
Family Plan:		
<ul style="list-style-type: none"> ▪ Child below 12 years old sharing parent room using existing bed: FREE (excluding breakfast) ▪ Child breakfast: US\$. 20++ per child / per meal ▪ Infant below 3 years old: Free of charge including baby cot 		
Inclusion:		
<ul style="list-style-type: none"> ▪ Hotel accommodation including Breakfast (Choice of American, Continental or Indonesian) ▪ Welcome drink and chilled towel upon arrival ▪ 21% service charge and prevailing government tax 		
Extra Benefit:		
<ul style="list-style-type: none"> ▪ Free Internet access at the restaurant and reception area ▪ Daily Eco-friendly drinking water dispenser in the room (5 liters) ▪ Minimum 2-nights stay: Welcome fruit basket in the room upon arrival ▪ Minimum 2-nights stay: Daily Free Afternoon tea including local tidbits served between 04.00 – 06.00 PM at Ela – Ela Restaurant 		
All above rates are subject to change without prior notice		

FACTS & DATA

2016 – 2017 TARIFF

(VALID UNTIL 31ST OF MARCH 2017)

VILLA RATES

ALL QUOTED IN US\$.

ALL YEAR-AROUND EXCEPT HIGH SEASON PERIOD	PUBLISHED RATE		
	1 -2 Adults	3 Adults	4 Adults
WATER'S EDGE VILLA (1-BEDROOM VILLA)	408.00++	444.00++	N/A
TANGKONG VILLA (2-ensuite Villa or as 2-bedroom family villa)	548.00++	584.00++	620.00++
RINJANI VILLA (2-bedroom double storey Villa)	668.00++	704.00++	740.00++
HIGH SEASON PERIOD 15 JUL. - 15 SEP. AND 20 DEC. - 10 JAN	PUBLISHED RATE		
	1 -2 Adults	3 Adults	4 Adults
WATER'S EDGE VILLA (1-BEDROOM VILLA)	456.00++	492.00++	N/A
TANGKONG VILLA (2-ensuite Villa or as 2-bedroom family villa)	596.00++	632.00++	668.00++
RINJANI VILLA (2-bedroom double storey Villa)	714.00++	752.00++	788.00++
Compulsory Dinner:			
<ul style="list-style-type: none"> ▪ Christmas Dinner: US\$. 121++ per person per meal / New Year's Eve: US\$. 151++ per person per meal ▪ Child below 12 years old: 50% discount ▪ No checkout is allowed on 30th & 31st of December 			
Family Plan:			
<ul style="list-style-type: none"> ▪ Child below 12 years old sharing parent room using existing bed: FREE (excluding breakfast) ▪ Child breakfast: US\$. 20 ++ per child / per meal ▪ Infant below 3 years old: Free of charge including baby cot 			
Inclusion:			
<ul style="list-style-type: none"> ▪ Hotel accommodation including Breakfast (Choice of American, Continental or Indonesian) ▪ Welcome drink and chilled towel upon arrival ▪ 21% service charge and prevailing government tax 			
Extra Benefit:			
<ul style="list-style-type: none"> ▪ Free Internet access at the restaurant and reception area ▪ Daily Eco-friendly drinking water dispenser in the room (5 liters) ▪ Minimum 2-nights stay: Welcome fruit basket in the room upon arrival ▪ Minimum 2-nights stay: Daily Free Afternoon tea including local tidbits served between 04.00 – 06.00 PM at Ela – Ela Restaurant 			
All above rates are subject to change without prior notice			

FACTS & DATA

2016 – 2017 TARIFF
(VALID UNTIL 31ST OF MARCH 2017)

MEAL RATES

ALL QUOTED IN US\$.

ALL YEAR-AROUND	PUBLISHED RATE	
	ADULT	CHILD (-12YO)
BREAKFAST Choice of American, Continental or Indonesian	25.00++ PERSON/MEAL	20.00++ PERSON/MEAL
LUNCH Table D'hôte or 3-course set Menu	43.00++ PERSON/MEAL	21.50++ PERSON/MEAL
DINNER Table D'hôte or 3-course set Menu	48.00++ PERSON/MEAL	24.00++ PERSON/MEAL
CANDLE LIGHT DINNER (ROMANTIC DINNER) 5-course set Menu	180.00++ PER COUPLE	
HALF-BOARD (LUNCH OR DINNER) (MODIFIED AMERICAN PLAN)	43.00++ PERSON/MEAL	21.50++ PERSON/MEAL
FULL-BOARD (LUNCH + DINNER) (FULL AMERICAN PLAN)	75.00++ PERSON/MEAL	37.50++ PERSON/MEAL
Half-board and Full board meal plan Include Breakfast which is already built-in in the room or villa rates		
All above rates are subject to change without prior notice		

2016 – 2017 TARIFF
(VALID UNTIL 31ST OF MARCH 2017)

HOTEL TRANSFER

ALL QUOTED IN US\$.

TO/FROM COCOTINOS SEKOTONG LOMBOK	PUBLISHED RATE PER PRIVATE CAR	
	ONE-WAY	RETURN
Lombok International Airport	60.00++	110.00++
City of Mataram, Ampenan, Cakranegara, Suweta	60.00++	110.00++
Senggigi area	66.00++	120.00++
Kuta Lombok / Tanjung An	66.00++	120.00++
LembarHarbour	48.00++	75.00++
TelukKodek / Bangsal / Medana /Tanjung / Sire	78.00++	135.00++
Other Transportation which can be arranged from Cocotinos Front Desk		
Self-drive Car Rental for 4 hours and above; or	On Request	
Car Rental with driver for 4 hours and above; or		
Rental of Motor bike and Bicycle		
Maximum capacity per private car: 4 persons including reasonable size luggage		
Advance reservation is a must		
All above rates are subject to change without prior notice		

FACTS & DATA

RESORT FACILITIES

- **24 HOURS RECEPTION**

The Cocotinos Guest Service Desk is open for 24 hours

- **ELA - ELA RESTAURANT AND BAR**

The Ela - Ela Restaurant and Bar, lobby, swimming pool and water sports center are located within close proximity to each other to encourage social interaction among guests who share common interests. Power points located on every column in the restaurant make photo viewing and sharing after diving so much more fun.

The Ela - Ela Restaurant and Bar has unobstructed views of the ocean and the 3 southern 'gilis', namely, Gili Nanggu, Gili Tangkong and Gili Sudak, and offers all-day-dining with contemporary international cuisine which includes a selection of special local cuisine including Cocotinos Manado specialties, our first resort in North Sulawesi

This al fresco restaurant is also the venue for the daily afternoon High Tea Service, complimentary to in-house guests.

The bar serves a selection of spirits, cocktails, tropical fresh fruit juices, selection of wine, light meals and snacks - perfect for the evening aperitif.

- Seating capacity: 60 people
- Open daily from 07:00 am to 11:00 pm
- Dress code: Casual – elegant

- **ROOM SERVICE**

The Room Service is available daily from 07:00 am to 10:00 pm, offering a choice of western, Indonesian and Asian dishes

- **SWIMMING POOL**

The swimming pool is the central feature of the resort and is set within a lawn next to the Ela - Ela Restaurant & Bar, overlooking the ocean and 3 southern 'gilis'. It is surrounded by lush tropical gardens and directly accessible from the lobby, the restaurant and the beach. Pool Attendant is on duty until 07:00 pm

- **ODYSSEA DIVERS (www.odysseadivers.com)**

- A fully equipped professional PADI and SSI registered dive centre with top-rated safety standards managed by the same management company of Cocotinos led by Syainal Hamid (PADI Dive Instructor).
- Courses are conducted in the resort's swimming pool and surrounding calm, shallow, open water.
- The compressor room is specially designed for the natural influx of fresh air and the centre uses only the best quality air purifiers to ensure every dive is as enjoyable as it should be!
- The dive centre also provides an Enriched Air Nitrox option and a spacious photography work station equipped with a digital station to work on your images, sockets and adaptors for charging batteries, drying stations and large, fresh water tubs for rinsing cameras.

FACTS & DATA

- The Dive Team is trained in First Aid and In-Water Rescue procedures, and conduct regular refresher courses to assure their knowledge remains current. All of Odyssea's boats are equipped with Emergency First Aid Kits and DAN Twin Jumbo
- D Oxygen kits as well as VHF radios and mobile phones. 2 large (40L) Medical Oxygen tanks at the dive centre to provide additional support if required. The nearest Decompression chamber is located in Denpasar Bali and is about 3 hours by speed boat to Bena Harbor (Bali).
- Open daily from 09:00 am to 05:00 pm unless for night dive

• LALEINA SPA

Guest can live the spa life. With life style programs that enhance the quality of life with fitness/wellness activities and life/health enrichment programs.

The Laleina Spa is set on the water's edge overlooking the ocean and the 3 southern 'gilis' of Gili Nanggu, Gili Sudak and Gili Tangkong

The Laleina Spa is conceptualized as being *Authentic, Simple, Pleasurable, and Affordable* with an approach that is more stress-free, non-intimidating and indigenous to the environment and traditions.

The Laleina Spa prides itself to have a simple, stress-free menu where guests can buy a 30, 60, 90 minute massage, facial or body treatment

Facility:

- One (1) single luxury treatment with Jacuzzi
- One (1) double luxury treatment with Jacuzzi
- One (1) Large Open-air Massage Bale

All with unobstructed views of the ocean and the 3 southern 'gilis'; a perfect place to enjoy body and foot massage, herbal baths and other spa treatments.

Laleina Spa is open daily from 09:00 am to 09:00 pm

• SAFETY AND SECURITY - RESORT

- Guest safety is our utmost priority. We provide a fire extinguisher and smoke detector in every room.
- Furniture and fixtures throughout the resort are designed to be comfortable, friendly and safe to use.
- Our well-trained security staffs are on 24-hour duty and are equipped with security tools such as under-carriage vehicle, metal detectors, tasters, etc.
- Cocotinos Sekotong works closely with the local Police force to ensure guests safety.

• MEDICAL SERVICE

- 24-hour on-call medical doctor is available
- Cocotinos Sekotong is affiliated with licensed medical clinic, located in Pelangan Village and West Sekotong just 15 minutes drive from the resort, which offer medical assistance.
- Cocotinos Sekotong Lombok also works closely with a "hospital of international standard" located in Mataram

FACTS & DATA

- **FAMILY PLAN**

- Any extra guest, whether it be child or adult can be accommodated in all categories of rooms which are equipped with “in-door Daybed”. For in-houseguests with children, in the evening our room attendant will set up the daybed as an extra bed with regular bed linen, pillows and duvet.
- For a child under 12 years old, the accommodation is free of charge excluding the breakfast – Breakfast rate for child is as per meal price US\$. 20++
- For an adult extra guest, it is subject to the extra guest charge of US\$. 36++
- 2 Children occupying one separate room will be charged at reduced rate which is available on request,

- **HONEYMOONERS**

- Cocotinos Sekotong Lombok has tranquil location and romantic setting makes Cocotinos Sekotong a haven for honeymooners.
- Honeymoon couples staying at Cocotinos Sekotong will receive a complimentary heart-shaped flower arrangement on the bed and additional decorations to enhance the mood. A honeymoon cake and petal bath on the second night (in the villas only) will be provided with the condition that such an occasion is informed when making the booking.
- A candle-light dinner at the restaurant or the resort's pool area may be arranged, and for those in the villa, the dinner could be served in the privacy of the villa. Our chef will personally prepare a special set menu including wine tasting to suit the occasion, all at a reasonable price.

- **CHECK IN PROCEDURES**

- Official check in time is 02:00 p.m.
- Cocotinos Sekotong Lombok, however, will try to accommodate earlier arrival guests based on the availability and the readiness of each designated room. If not available, the guests will be directed to the Restaurant while waiting for their room and will be served with our special welcome drink and local tidbits on the house (First drink).
- Welcome drink: Our staff will immediately serve the guest a special welcome drink tray which includes chilled face towel and a non-alcoholic welcome drink in the room or in the restaurant. However, for late evening arrivals, this will be prepared and kept fresh in the guest room refrigerator.
- A welcome tray of Lombok delicacies & sweets will be served for those guests in the villas upon arrival in addition to the common fruit basket. This will be replenished on the 3rd day with a different assortment.
- In order to speed-up the process of guest check in, all booking travel agents are requested to fax or email the copy of the “Hotel Service Voucher” and clearly specify all instructions of required services, at least 5 days prior to each guest arrival at the resort.
- For the “first-timers”, we would highly recommend that each booking agent provide our reservation department with as much guest particulars as possible when finalizing the reservation.
- A registration form will be placed on the writing table in the guest room so that the guest can be immediately taken to their room after receiving the room’s key. This way, they can complete and return the registration form to our Guest Information
- Assistant at their convenience on the same day or next morning in case of late arrival.

FACTS & DATA

- **CHECKOUT PROCEDURES**

- Our official checkout time is at 12:00 Noon.
- For the courtesy of our next expected arrival guests who have booked the same room, we would expect the guest to vacate the room on time.
- For those staying in the Villa, our Guest Information Assistant will endeavor to offer one to two hours extended checkout time, subject to room availability.
- Any extended stay until 06:00 pm is subject to 50% of the room rate, after which it will be charged one full night room rate.

- **CREDIT CARD**

- Credit card is acceptable for payment of hotel bill which will be converted into “Indonesian Rupiah” as per banking regulation in Indonesia. In doing so, resort’s book keeping conversion rate is being used
- **For now, Cocotinos Sekotong Lombok can accept Master and Visa Card only**

- **MONEY CHANGER**

- Cocotinos Sekotong can help the guest exchange currency at the Guest Service Desk using the today’s conversion rate that is designated by the resort’s bookkeeping ratio.

- **AIRPORT TRANSFER**

- The Cocotinos is delighted to offer car transfer to and from the airport for a reasonable charge.
- Upon boarding the car, our chauffeur will treat our guest with the first taste of our personalized service by offering them chilled-face towels and refreshments.
- Should the guests arrive during the day, the 60 – 75 minute journey to Sekotong will be through the lush country side, rice fields and meandering coastal road so that guests can enjoy the beautiful panorama of the sea and the villages with local folk going about their daily routine.
- Advanced reservations are needed.

- **LAUNDRY AND VALET SERVICES**

- Laundry and valet service is available daily.
- Collection before 10:00 am will ensure delivery before 6:00 pm same day.
- A pressing service is available

- **GUEST SERVICE ASSISTANT (GSA)**

- Cocotinos Sekotong Lombok has implemented a different approach to guest service by the introduction of the Guest Service Assistant (**GSA**), doing away with the stereo type functions such as Front Office clerk, or Bell Boy even Butler as we believe these traditional hotel descriptions for not foster a warm rapport between our guests and staff. Every guest assistant is carefully selected and trained to provide unobtrusive and graceful service.

Whether she or he is on duty in the lobby or in the villa, the prime responsibility is to assist the guest whether it is for information, housekeeping or room service.

- Being a small luxury boutique resort, the creation of an intimate friendly atmosphere in the lobby is of utmost importance. It’s our intention that each of guests who step into “Cocotinos Sekotong Lombok” should feel immediately at home.

FACTS & DATA

- The Guest Service Assistant counter at Cocotinos Sekotong Lombok is placed in such a way to facilitate the warm interaction between the staff and the guests.
- Express checkout can be arranged in the guest room.
- **OTHER GUEST ACTIVITIES**
 - The following great and interesting outdoor activities around Sekotong that can be arranged from our Guest Service Desk
 - Diving
 - Snorkeling
 - Wind-surfing and canoeing
 - Trekking
 - Village Walk
 - Visit to Lombok Marine Aquaculture Development Center
 - Visit to traditional market
 - Land Tour around Sekotong including a visit to Lombok’s Surfing haven at Bangko-Bangko
 - Lombok half and/or full day tours
 - Island Hopping to Gili Nanggu, Gili Sudak, Gili Tangkong, Gili Gede etc.
 - Other tailored-made tours including Rinjani Mountain climbing etc.
 - Cocotinos Sekotong Lombok works only with professional and licensed operators
- **RESORT ACCESSIBILITY & DISTANCES FROM / TO COCOTINOS SEKOTONG LOMBOK**
 - The resort is easily accessible from the main road with a quite parking space for sedan, limousine or mini busses.

DISTANCES FROM/TO COCOTINOS SEKOTONG LOMBOK

From /to Cocotinos Sekotong Lombok	KM	By Car
Lombok International Airport	#58 K	60 – 75 Minutes
City of Mataram, Cakranegara, Ampenan	#51 – 55 K	60 – 75 Minutes
Pandanan Village – (Sasak village)	02 K	Short drive
Batu Leong Village (Balinese village)	02 K	Short drive
Tawun Village – (Sasak fishermen village)	03 K	Short drive
Pengawisan Village (Sasak village)	04 K	Short drive
Pelangan Village (Sasak village)	10 K	15 minute
Gubuk Bali Village (Balinese village)	12 K	15 minutes
Marine Aqua Culture Development Centre	05 K	05 minutes

COCOTINOS

A Boutique Beach Resort & Spa
Sekotong • Lombok

FACTS & DATA

DISTANCES FROM/TO COCOTINOS SEKOTONG LOMBOK

Traditional Street Market		5 – 10 minutes
Bangko-Bangko (Village)	20 K	20 Minutes
Bangko-Bangko (Dessert point / Surfing sport)	23 K	35 Minutes
Lembar Harbour	25 K	35 Minutes
Senggigi Beach	~	#2 hours
Sire Beach / Tanjung / Medana	~	# 3 hours
Kuta Lombok : 2 Hours car drive	65 K	# 2 hours
Nearest ATM Machine (Gerung)	37 K	45 - 60 minutes
Banks	51 – 58 K	60 – 75 minutes
Police Station (Nearest)	12 K	20 Minutes
Mosque	3 K	5 Minutes
Churches (Protestant & Catholic)	52 K	60 – 75 minutes
Hindus Temple	1 K	5 minutes
Local Clinics	10 K	15 – 25 minutes
Public and Private Hospitals	52 K	60 – 75 minutes
From / to		By Boat Ride (Cocotinos Boats)
Gili Nanggu		10 minutes
Gili Tangkong		10 minutes
Gili Sudak		10 minutes
Gili Ringgit		15 minutes
Gili Gede		20 minutes
Gili Kura-Kura		10 minutes
Gili Trawangan or Gili Meno or Gili Air		90 - 120 minutes

FACTS & DATA

GETTING TO LOMBOK

TIME TABLE FOR DOMESTIC FLIGHTS TO/FROM LOMBOK

NO	City and Airport		Day of Operating	Airline Company	Flight Number / Type of aircraft		Estimated Time of		Time (Hour/Minute)
	To	From			Departure	Arrival			
A LOP - DPS									
1	LOP	DPS	Daily	Merpati Nusantara	MZ - 6601	MA - 60	07.00	07.30	30M
2	LOP	DPS	Daily	Trans Nusa	MV - 510		07.00	07.30	30M
3	LOP	DPS	Daily	Merpati Nusantara	MZ - 6602	MA - 60	09.30	10.15	45M
4	LOP	DPS	Daily	Wings Air/Lion Air	ATR - NG	B737-900	10.45	11.15	45M
5	LOP	DPS	Daily	Merpati Nusantara	MZ - 6061	MA - 60	11.40	12.45	45M
6	LOP	DPS	Daily	Merpati Nusantara	MZ - 6607	MA - 60	15.25	16.00	35M
7	LOP	DPS	Daily	Trans Nusa	MV - 515		16.00	16.30	30M
8	LOP	DPS	Daily	Merpati Nusantara	MZ - 6606	MA - 60	17.00	17.30	30M
9	LOP	DPS	Daily	Wings/Lion Air	ATR - NG	B737-900	18.05	18.55	50M
10	LOP	DPS	Daily	Garuda Indonesia	GA - 437	B737-800 NG	17.50	18.15	25M
B DPS - LOP									
1	DPS	LOP	Daily	Trans Nusa	MV - 511		08.00	08.30	30M
2	DPS	LOP	Daily	Merpati Nusantara	MZ - 6602	MA - 60	08.40	09.00	20M
3	DPS	LOP	Daily	Wings Air/Lion Air	JT - 1852	ATR - NG	09.50	10.20	30M
4	DPS	LOP	Daily	Wings Air/Lion Air	JT - 1850	ATR - NG	11.40	12.10	30M
5	DPS	LOP	Daily	Merpati Nusantara	MZ - 6606	MA - 60	14.15	14.55	30M
6	DPS	LOP	Daily	Merpati Nusantara	MZ - 6608	MA - 60	16.30	17.10	30M
7	DPS	LOP	Daily	Wings Air/Lion Air	JT - 1854	ATR - NG	16.50	17.20	40M
8	DPS	DOP	Daily	Trans Nusa	MV - 517		17.00	17.30	30M
9	DPS	LOP	Daily	Garuda Indonesia	GA - 436	B737-800 NG	16.20	17.45	25M
10	DPS	LOP	Daily	Merpati Nusantara	MZ - 6600	MA - 60	18.45	19.25	40m
C LOP - SUB									
1	LOP	SUB	Daily	Merpati Nusantara	MZ - 830	MA - 60	09.40	09.40	1H
2	LOP	SUB	Daily	Wings Air/Lion Air	JT - 680	ATR - NG	11.35	11.30	1H 5M
3	LOP	SUB	3	Citilink	QG - 661	B737 -700	18.05	18.10	1H 5M
4	LOP	SUB	Daily	Merpati Nusantara	MZ - 6603	MA - 60	19.30	20.00	2H 35M
5	LOP	SUB	Daily	Merpati Nusantara	MZ - 603	MA - 60	20.40	20.30	1H 10M
D SUB - LOP									
1	SUB	LOP	Daily	Merpati Nusantara	MZ - 602	MA - 60	06.10	07.50	1H 40M
2	SUB	LOP	Daily	Trans Nusa	MV - 510		07.45	09.25	2H 20M
3	SUB	LOP	Daily	Merpati Nusantara	MZ - 6602	MA - 60	08.30	09.00	1H 30M
4	SUB	LOP	Daily	Merpati Nusantara	MZ - 6606	MA - 60	11.15	11.45	1H 30M
5	SUB	LOP	Daily	Merpati Nusantara	MZ - 831	MA - 60	16.50	18.50	2H
E LOP - UPG									
1	LOP	UPG	Daily	Garuda Indonesia	GA - 681	B737-800 NG	13.20	14.33	2H 5M
F UPG - LOP									
1	UPG	LOP	Daily	Garuda Indonesia	GA - 680	B737-800 NG	11.15	12.40	1H 25M
G LOP - CGK									
1	LOP	CGK	Daily	Wings Air/Lion Air	JT - 651	B737-900	06.00	06.55	1H 55M
2	LOP	CGK	Daily	Garuda Indonesia	GA - 431	B737-800 NG	06.55	07.45	1H 40M
3	LOP	CGK	Daily	Wings Air/Lion Air	JT - 655	B737-300	10.35	11.35	2H 35M
4	LOP	CGK	Daily	Wings Air/Lion Air	JT - 1851	B737-300	12.35	13.05	1H 30M
5	LOP	CGK	Daily	Garuda Indonesia	GA - 433	B737-800 NG	15.05	15.55	1H 50M
6	LOP	CGK	Daily	Wings Air/Lion Air	JT - 1853	B737-300	16.15	17.05	2H 10M
CGK - LOP									

FACTS & DATA

1	CGK	LOP	Daily	Wings Air/Lion Air	JT - 654	B737-300	07.00	09.54	2H 45M
2	CGK	LOP	Daily	Garuda Indonesia	GA - 430	B737-800 NG	11.20	11.40	1H 20M
3	CGK	LOP	Daily	Wings Air/Lion Air	JT - 658	B737-300	12.30	15.15	3H 10M
4	CGK	LOP	Daily	Wings Air/Lion Air	JT - 658	B737-300	14.20	17.05	3H 45M
5	CGK	LOP	Daily	Garuda Indonesia	GA - 437	B737-800 NG	18.05	20.05	2H

Important information:

- Check-in Time for all domestic flight: At least One hour prior to departure
- Airport tax for domestic flight at LOP: IDR. 25,000 per head
- Airport tax for domestic flight at DPS / CGK: IDR. 40,000 per head

Legend: Airline code

GA: Garuda Indonesia	JT: Wingair/Lion Air	MZ: Merpati Nusantara	MV: Transnusa	QG: City Link

Legend: Airport code / City

DPS: Denpasar Bali Ngurah Rai Int' Airport	LOP: Lombok Praya BIL: Bandara In't Lombok	CGK: Jakarta Cengkareng Soekarno-Hatta Airport	SUB: Surabaya Ir. Juanda In't Airport	JOG: Jogyakarta Adi Sucipto
UPG: Makassar Hassanuddin Int Airport	MU: Bima Muhammad Salahuddin Airport			

FACTS & DATA

TIME TABLE FOR INTERNATIONAL FLIGHTS TO / FROM LOMBOK

NO	City and Airport		Day of Operating	Airline Company	Flight Number / Type of aircraft		Estimated Time of		Time (Hour/Minute)
	To	From			Departure	Arrival			
A KUL – LOP									
1	KUL	LOP	Daily	Air Asia	AK-1408		08.40	11.45	3H 10M
2	KUL	LOP	Daily	Air Asia	AK-1408		08.40	11.45	3H 10M
B LOP – KUL									
1	LOP	KUL	Daily	Air Asia	AK-1409		02.15	15.25	3H 10M
2	LOP	KUL	Daily	Air Asia	AK-1409		02.15	15.25	3H 10M
C SIN – LOP									
1	SIN	LOP	MONDAY	Silk Air	MI-128		15.35	18.30	3H 10M
2	SIN	LOP	THURSDAY	Silk Air	MI-128		15.35	18.30	3H 10M
3	SIN	LOP	SATURDAY	Silk Air	MI-128		15.35	18.30	3H 10M
D LOP – SIN									
1	LOP	SIN	MONDAY	Silk Air	MI-127		19.25	22.05	3H 10M
2	LOP	SIN	THURSDAY	Silk Air	MI-127		19.25	22.05	3H 10M
3	LOP	SIN	SATURDAY	Silk Air	MI-127		19.25	22.05	3H 10M

Important information:

- Check-in Time for all international flight: At least Two hour prior to departure
- Airport tax for domestic flight at LOP: IDR. 100,000 per head

Legend: Airline code

AK: Air Asia	SQ: Silk Air	Q: Jet Star	Tiger Air	

Legend: Airport code / City

KUL: Kuala Lumpur In't Malaysia	LOP: Lombok Praya BIL: Bandara In't Lombok	PERTH: Australia In't Airport	SIN: Singapore In't Airport	

COCOTINOS

A Boutique Beach Resort & Spa

Sekotong • Lombok

FACTS & DATA

LOCATION MAP (IN RELATION TO SOUTH EAST ASIA)



COCOTINOS

A Boutique Beach Resort & Spa

Sekotong • Lombok

FACTS & DATA

LOCATION MAP (IN RELATION TO BALI & LOMBOK)

